

# PRODUCT SETUP FACT SHEET

## 4ft - 4 SIDED TABLE THROW

4ft - 4 sided (loose, fitted, stretched)

### FITTED



### LOOSE



### STRETCHED



### GENERIC FACTS:

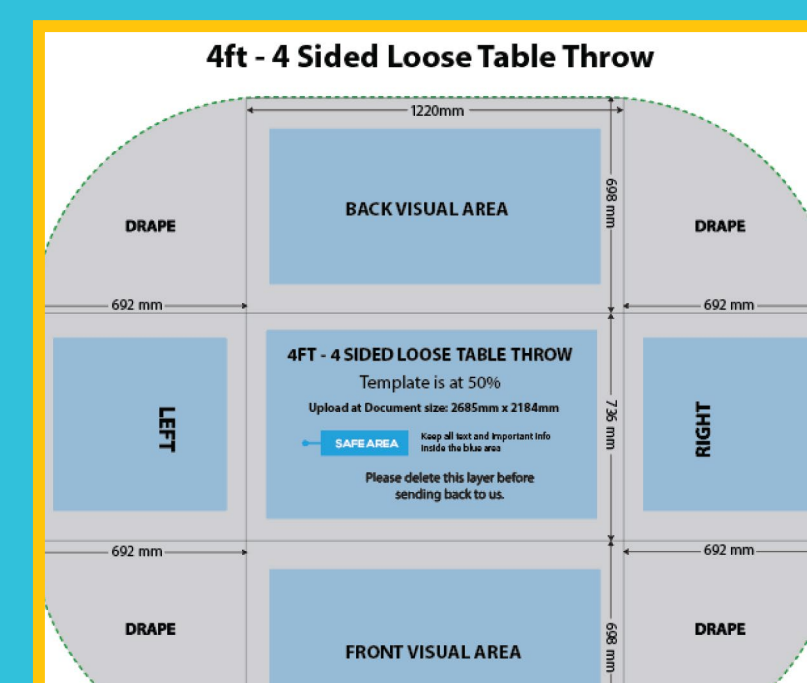
- Convert all text to outlines
- No bleed required
- File provided in CMYK only
- Our recommended rich black break down in 40%C, 40%M, 40%Y, and 100%K
- Supplied as press ready PDF

### IMPORTANT DESIGN NOTES:

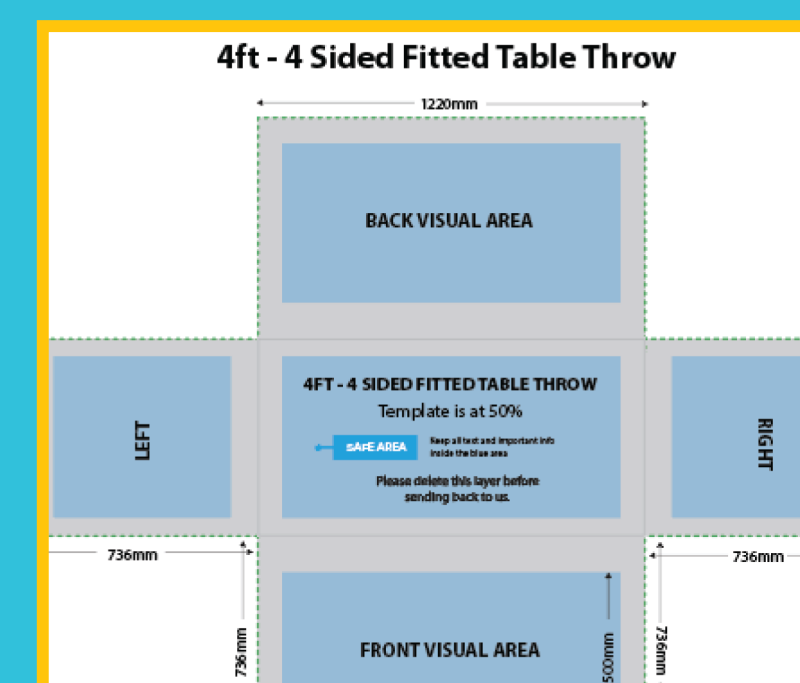
- As per industry standard colours may vary up to 5%
- For the best colour accuracy please refer to a Pantone colour guide and not your screen.

### PRODUCT SPECIFICS:

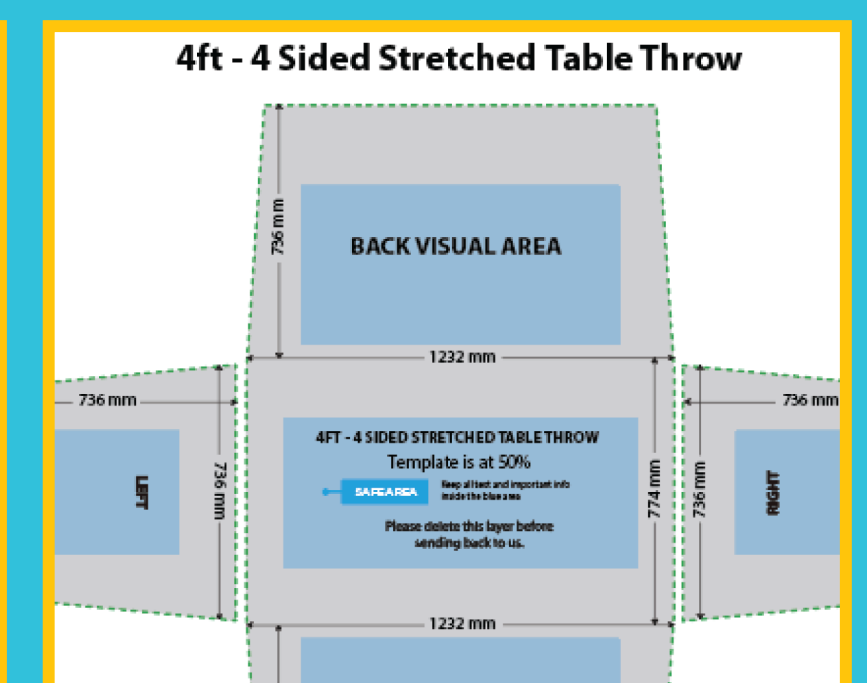
- No bleed required
- Template is at 50%
- Use of vector image recommended



Loose  
page 2



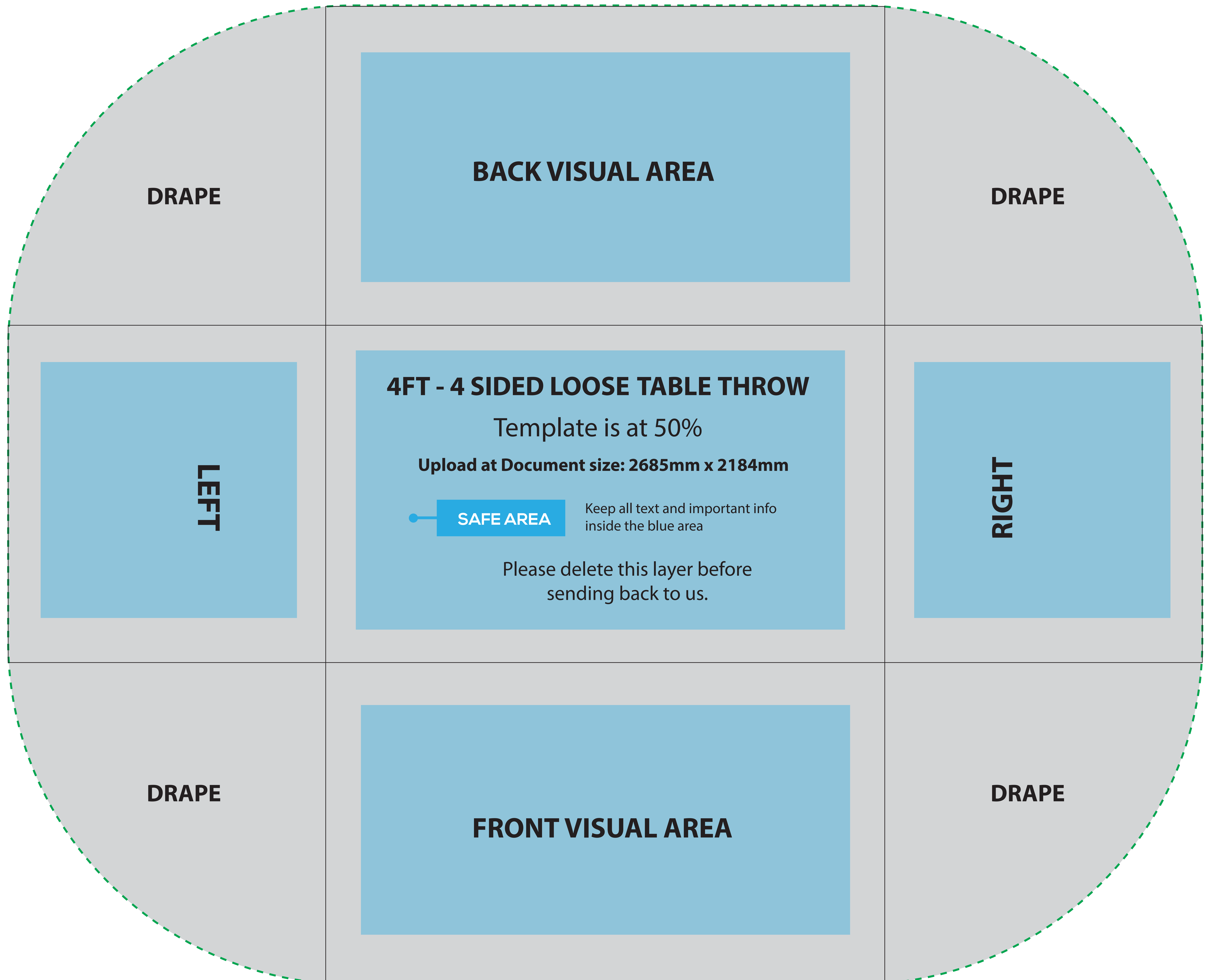
Fitted  
page 3



Stretched  
page 4

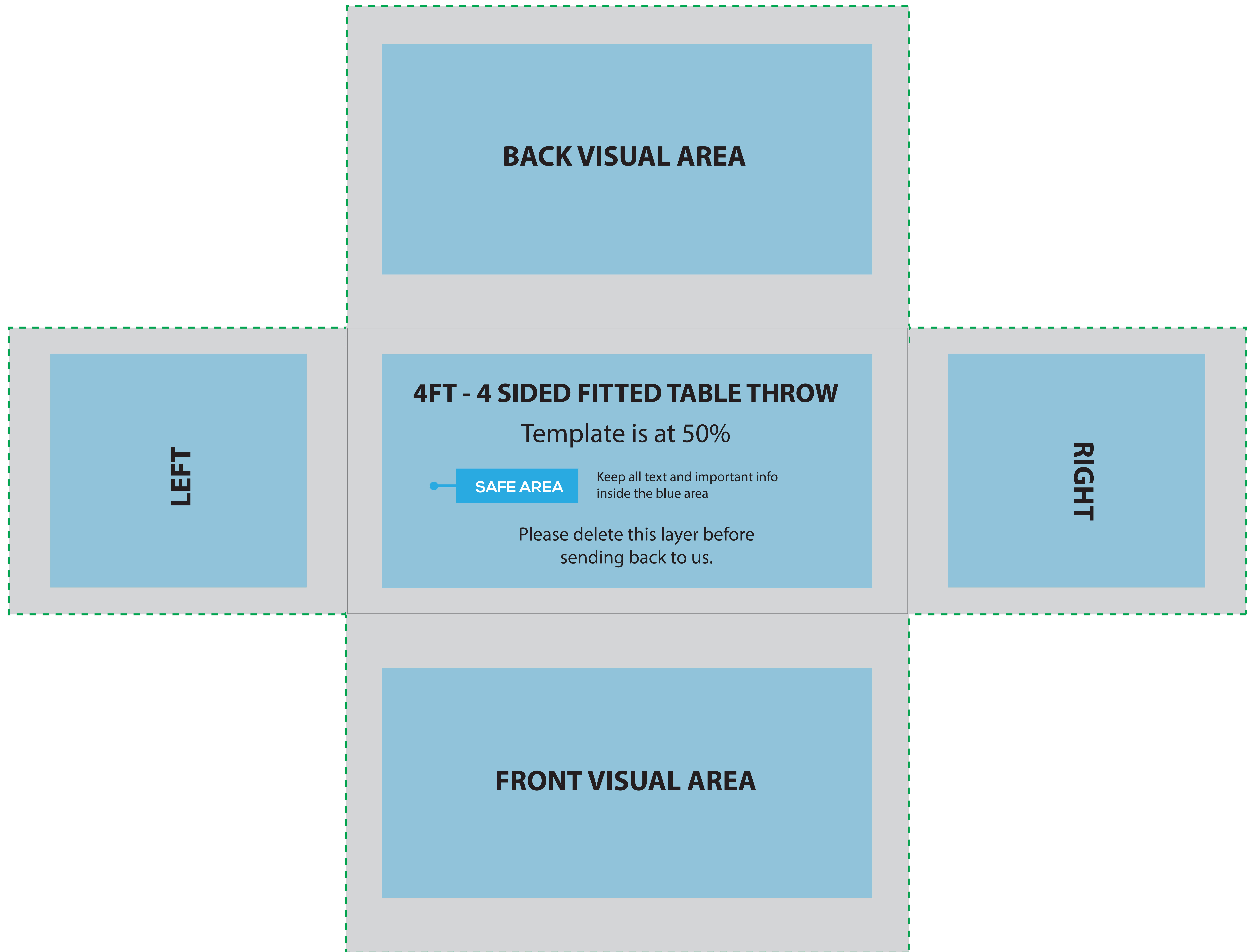
# 4ft - 4 Sided Loose Table Throw

To fit standard 4 foot trestle table size as follows: 4 foot: 1220mm W x 610mm D x 740mm H



# 4ft - 4 Sided Fitted Table Throw

To fit standard 4 foot trestle table size as follows: 4 foot: 1220mm W x 610mm D x 740mm H



# 4ft - 4 Sided Stretched Table Throw

To fit standard 4 foot trestle table size as follows: 4 foot: 1220mm W x 610mm D x 740mm H

